



# CMOS High Voltage Logic – CD4070B

Quadruple Exclusive-OR Gate Logic IC in bare die form

Rev 1.0  
15/03/18

## Description

The CD4070B Quad Exclusive OR Gate is fabricated using a 3µm 15CMOS process. This device consists of four independent Exclusive OR gates and performs the Boolean functions  $Y = A \oplus B = \bar{A}B + A\bar{B}$  in positive logic. The device has equal source and sink current capabilities and conforms to standard B series output drive. Inputs are protected against ESD and voltage transients by diode clamps to  $V_{DD}$  and  $V_{SS}$ .

## Features:

- High Input Voltage up to 20V
- Noise immunity greater than 50%
- All outputs buffered
- Drives x2 Low-Power TTL loads or x1 LSTTL load
- Symmetrical Sink & Source Currents
- Direct drop-in replacement for obsolete components in long term programs.

## Ordering Information

The following part suffixes apply:

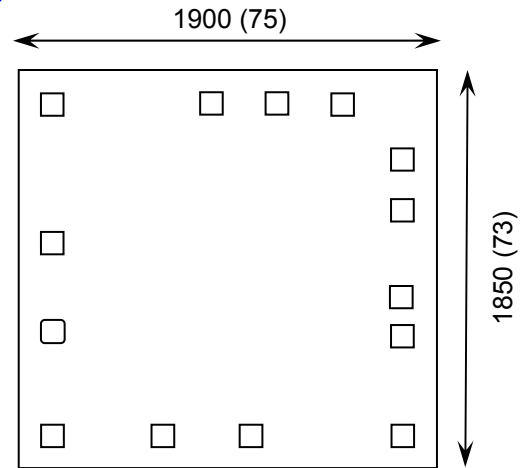
- No suffix - MIL-STD-883 /2010B Visual Inspection
- "H" - MIL-STD-883 /2010B Visual Inspection + MIL-PRF-38534 Class H LAT
- "K" - MIL-STD-883 /2010A Visual Inspection (Space) + MIL-PRF-38534 Class K LAT

LAT = Lot Acceptance Test.

For further information on LAT process flows see below.

[www.siliconsupplies.com/quality/bare-die-lot-qualification](http://www.siliconsupplies.com/quality/bare-die-lot-qualification)

## Die Dimensions in µm (mils)



## Supply Formats:

- Default – Die in Waffle Pack (100 per tray capacity)
- ~~Sawn Wafer on Tape~~ – On request
- Unsawn Wafer – On request
- Die Thickness <=> 350µm(14 Mils) – On request
- Assembled into Ceramic Package – On request

## Mechanical Specification

|                        |                            |            |
|------------------------|----------------------------|------------|
| Die Size (Unsawn)      | 1900 x 1850<br>75 x 73     | µm<br>mils |
| Minimum Bond Pad Size  | 106 x 106<br>4.17 x 4.17   | µm<br>mils |
| Die Thickness          | 350 (±20)<br>13.78 (±0.79) | µm<br>mils |
| Top Metal Composition  | Al 1%Si 1.1µm              |            |
| Back Metal Composition | N/A – Bare Si              |            |

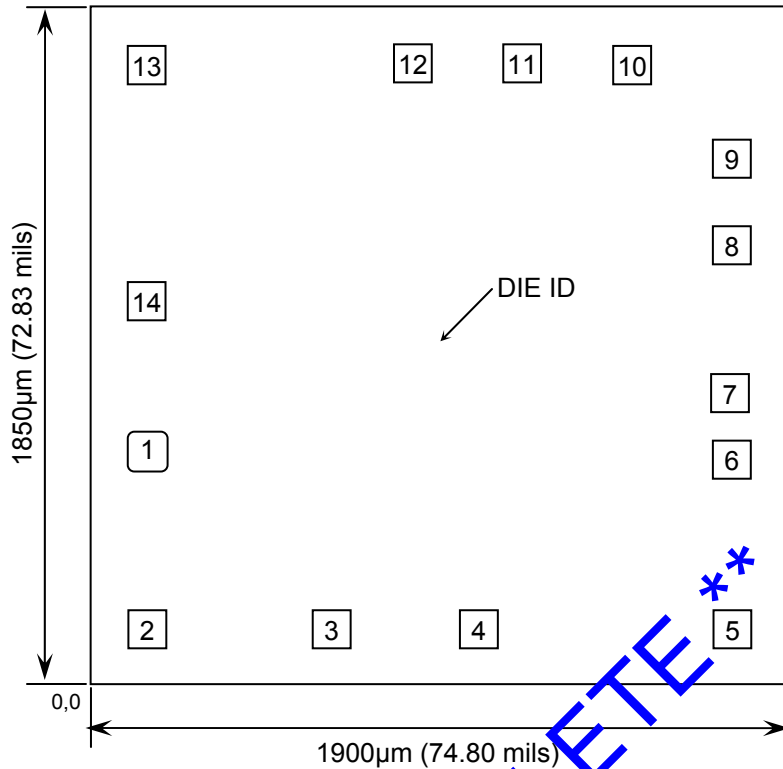




# CMOS High Voltage Logic – CD4070B

Rev 1.0  
15/03/18

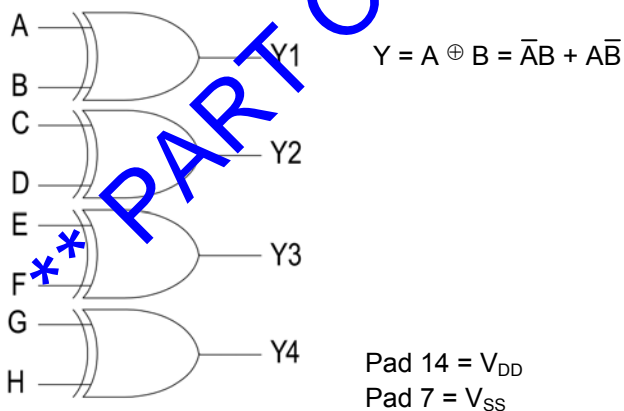
## Pad Layout and Functions



| PAD | FUNCTION        | COORDINATES (mm) |       |
|-----|-----------------|------------------|-------|
|     |                 | X                | Y     |
| 1   | A               | 0.107            | 0.589 |
| 2   | B               | 0.107            | 0.107 |
| 3   | Y1              | 0.608            | 0.107 |
| 4   | Y2              | 1.002            | 0.107 |
| 5   | C               | 1.687            | 0.107 |
| 6   | D               | 1.687            | 0.537 |
| 7   | V <sub>SS</sub> | 1.687            | 0.740 |
| 8   | E               | 1.687            | 1.142 |
| 9   | F               | 1.687            | 1.377 |
| 10  | Y3              | 1.414            | 1.637 |
| 11  | Y4              | 1.119            | 1.637 |
| 12  | G               | 0.824            | 1.637 |
| 13  | H               | 0.107            | 1.637 |
| 14  | V <sub>DD</sub> | 0.107            | 0.994 |

CONNECT CHIP BACK TO V<sub>DD</sub> OR FLOAT

## Logic Diagram



## Truth Table

| INPUTS |   | OUTPUT |
|--------|---|--------|
| A      | B | Y      |
| L      | L | L      |
| L      | H | H      |
| H      | L | H      |
| H      | H | L      |

H = High level (steady state)  
L = Low level (steady state)





# CMOS High Voltage Logic – CD4070B

Rev 1.0

15/03/18

## Absolute Maximum Ratings<sup>1</sup>

| PARAMETER   | SYMBOL                             | VALUE                        | UNIT |
|---|------------------------------------|------------------------------|------|
| DC Supply Voltage (Referenced to V <sub>SS</sub> )          | V <sub>DD</sub>                    | -0.5 to +20                  | V    |
| DC Input or Output Voltage (Referenced to V <sub>SS</sub> ) | V <sub>IN</sub> , V <sub>OUT</sub> | -0.5 to V <sub>DD</sub> +0.5 | V    |
| Storage Temperature Range                                   | T <sub>STG</sub>                   | -65 to 150                   | °C   |
| Input Current or Output Current (per Pad)                   | I <sub>IN</sub> , I <sub>OUT</sub> | ±10                          | mA   |
| Power Dissipation in Still Air <sup>2</sup>                 | P <sub>D</sub>                     | 750                          | mW   |

1. Operation above the absolute maximum rating may cause device failure. Operation at the absolute maximum ratings, for extended periods, may reduce device reliability. 2. Measured in plastic DIP package, results in die form are dependent on die attach and assembly method.

## Recommended Operating Conditions<sup>3</sup> (Voltages referenced to V<sub>SS</sub>)

| PARAMETER                        | SYMBOL                             | MIN | MAX             | UNITS |
|----------------------------------|------------------------------------|-----|-----------------|-------|
| Supply Voltage                   | V <sub>DD</sub>                    | 3.0 | 8               | V     |
| DC Input Voltage, Output Voltage | V <sub>IN</sub> , V <sub>OUT</sub> | 0   | V <sub>DD</sub> | V     |
| Operating Temperature Range      | T <sub>J</sub>                     | -55 | +125            | °C    |

3. This device contains protection circuitry to guard against damage due to high static voltages or electric fields. However, precautions must be taken to avoid applications of any voltage higher than maximum rated voltages to this high-impedance circuit. For proper operation, V<sub>IN</sub> and V<sub>OUT</sub> should be constrained to the range V<sub>SS</sub> ≤ (V<sub>IN</sub> or V<sub>OUT</sub>) ≤ V<sub>DD</sub>. Unused inputs must always be tied to an appropriate logic voltage level (e.g., either V<sub>SS</sub> or V<sub>DD</sub>). Unused outputs must be left open.

## DC Electrical Characteristics (Voltages referenced to V<sub>SS</sub>)

| PARAMETER                         | SYMBOL          | V <sub>DD</sub> | CONDITIONS                             | LIMITS |       |                         | UNITS |
|-----------------------------------|-----------------|-----------------|--|--------|-------|-------------------------|-------|
|                                   |                 |                 |  | 25°C   | 85°C  | FULL RANGE <sup>4</sup> |       |
| Minimum High-Level Output Voltage | V <sub>OH</sub> | 5V              | V <sub>IN</sub> = 0 or V <sub>DD</sub> | 4.95   | 4.95  | 4.95                    | V     |
|                                   |                 | 10V             | V <sub>IN</sub> = 0 or V <sub>DD</sub> | 9.95   | 9.95  | 9.95                    |       |
|                                   |                 | 15V             | V <sub>IN</sub> = 0 or V <sub>DD</sub> | 14.95  | 14.95 | 14.95                   |       |
| Maximum Low-Level Output Voltage  | V <sub>OL</sub> | 5V              | V <sub>IN</sub> = V <sub>DD</sub> or 0 | 0.05   | 0.05  | 0.05                    | V     |
|                                   |                 | 10V             | V <sub>IN</sub> = V <sub>DD</sub> or 0 | 0.05   | 0.05  | 0.05                    |       |
|                                   |                 | 15V             | V <sub>IN</sub> = V <sub>DD</sub> or 0 | 0.05   | 0.05  | 0.05                    |       |
| Minimum High-Level Input Voltage  | V <sub>IH</sub> | 5V              | V <sub>O</sub> = 0.5 or 4.5V           | 3.5    | 3.5   | 3.5                     | V     |
|                                   |                 | 10V             | V <sub>O</sub> = 1.0 or 9.0V           | 7.0    | 7.0   | 7.0                     |       |
|                                   |                 | 15V             | V <sub>O</sub> = 1.5 or 13.5V          | 11     | 11    | 11                      |       |
| Maximum Low-Level Input Voltage   | V <sub>IL</sub> | 5V              | V <sub>O</sub> = 4.5 or 0.5V           | 1.5    | 1.5   | 1.5                     | V     |
|                                   |                 | 10V             | V <sub>O</sub> = 9.0 or 1.0V           | 3.0    | 3.0   | 3.0                     |       |
|                                   |                 | 15V             | V <sub>O</sub> = 13.5 or 1.5V          | 4.0    | 4.0   | 4.0                     |       |
| Minimum Output (Source) Current   | I <sub>OH</sub> | 5V              | V <sub>OH</sub> = 2.5V                 | -3.0   | -2.4  | -1.7                    | mA    |
|                                   |                 | 5V              | V <sub>OH</sub> = 4.6V                 | -0.64  | -0.51 | -0.36                   |       |
|                                   |                 | 10V             | V <sub>OH</sub> = 9.5V                 | -1.6   | -1.3  | -0.9                    |       |
|                                   |                 | 15V             | V <sub>OH</sub> = 13.5V                | -4.2   | -3.4  | -2.4                    |       |

4. -55°C ≤ T<sub>J</sub> ≤ +125°C.





# CMOS High Voltage Logic – CD4070B

Rev 1.0

15/03/18

## DC Electrical Characteristics (Voltages referenced to $V_{SS}$ )

| PARAMETER                     | SYMBOL   | $V_{DD}$ | CONDITIONS                    | LIMITS    |           |                         | UNITS   |
|-------------------------------|----------|----------|-------------------------------|-----------|-----------|-------------------------|---------|
|                               |          |          |                               | 25°C      | 85°C      | FULL RANGE <sup>4</sup> |         |
| Minimum Output (Sink) Current | $I_{OL}$ | 5V       | $V_{OL} = 0.4V$               | 0.64      | 0.51      | 0.36                    | mA      |
|                               |          | 10V      | $V_{OL} = 0.5V$               | 1.6       | 1.3       | 0.9                     |         |
|                               |          | 15V      | $V_{OL} = 1.5V$               | 4.2       | 3.4       | 2.4                     |         |
| Maximum Input Leakage Current | $I_{IN}$ | 15V      | $V_{IN} = V_{DD}$ or $V_{SS}$ | $\pm 0.1$ | $\pm 0.1$ | $\pm 1.0$               | $\mu A$ |
| Maximum Quiescent Current     | $I_{DD}$ | 5V       | $V_{IN} = V_{DD}$ or $V_{SS}$ | 0.25      | 0.25      | 7.5                     | $\mu A$ |
|                               |          | 10V      |                               | 0.5       | 0.5       | 15                      |         |
|                               |          | 15V      |                               | 1.0       | 1.0       | 30                      |         |

## AC Electrical Characteristics<sup>5</sup>

| PARAMETER   | SYMBOL             | $V_{DD}$ | CONDITIONS   | LIMITS  |      |                         | UNITS |
|---|--------------------|----------|--|---------|------|-------------------------|-------|
|   |                    |          |  | 25°C    | 85°C | FULL RANGE <sup>4</sup> |       |
| Maximum Propagation Delay, Input to Output (Figure 1) | $t_{PLH}, t_{PHL}$ | 5V       | $C_L = 50pF$ ,<br>$R_L = 200k\Omega$ ,<br>$t_r = t_f = 20ns$ | 280     | 280  | 560                     | ns    |
|   |                    | 10V      |  | 130     | 130  | 260                     |       |
|   |                    | 15V      |  | 100     | 100  | 200                     |       |
| Maximum Output Transition Time, Any Output (Figure 1) | $t_{TLH}, t_{THL}$ | 5V       | $C_L = 50pF$ ,<br>$R_L = 200k\Omega$ ,<br>$t_r = t_f = 20ns$ | 200     | 200  | 400                     | ns    |
|   |                    | 10V      |  | 100     | 100  | 200                     |       |
|   |                    | 15V      |  | 80      | 80   | 160                     |       |
| Maximum Input Capacitance                             | $C_{IN}$           |          | $T_A = 25^\circ C$<br>$V_{IN} = 0V$                          | TYPICAL |      |                         | pF    |
|   |                    |          |  | -       | 5    | -                       |       |

5. Not production tested in die form, characterized by chip design and tested in package.

### Switching Waveform

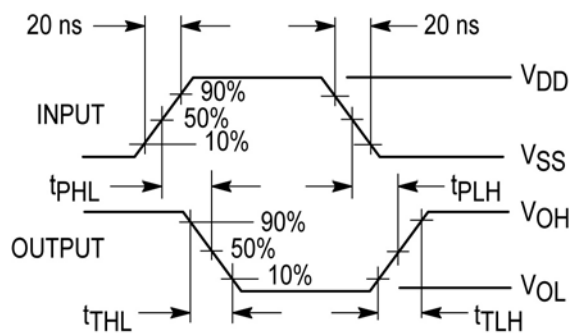


Figure 1 – Propagation Delay, Output Timing



**\*\* PART OBSOLETE \*\* - DISCONTINUED**

**DISCLAIMER:** The information given in this document shall in no event be regarded as a guarantee of conditions or characteristics. With respect to any examples or hints given herein, any typical values stated herein and/or any information regarding the application of the device, Silicon Supplies Ltd hereby disclaims any and all warranties and liabilities of any kind.

**LIFE SUPPORT POLICY:** Silicon Supplies Ltd components may be used in life support devices or systems only with the express written approval of Silicon Supplies Ltd, if a failure of such components can reasonably be expected to cause the failure of that life support device or system or to affect the safety or effectiveness of that device or system. Life support devices or systems are intended to be implanted in the human body or to support and/or maintain and sustain and/or protect human life. If they fail, it is reasonable to assume that the health of the user or other persons may be endangered.

